

Greyhound Racing New South Wales

# GRNSW Quarterly Greyhound Racing Injury Report

---

1 April 2018 to 30 June 2018

## Overview

This report is published by Greyhound Racing New South Wales (GRNSW) and details greyhound injuries and fatalities that occur at race meetings in New South Wales (NSW), as well as the related euthanasia of greyhounds. The primary purpose of this report is to keep GRNSW stakeholders including greyhound racing industry participants, wagerers, business partners and the community informed of greyhound racing injuries, fatalities and related euthanasia in the interests of transparency.

This is a quarterly report covering the period 1 April 2018 to 30 June 2018.

This report has been prepared using the information on greyhound racing injuries, fatalities and related euthanasia recorded by on track veterinarians and stewards and maintained in the OzChase system by GRNSW.

### Injury severity classification

All greyhounds with an on-track veterinary reported injury have been included in this report. As the injuries range from very mild and requiring no incapacitation period to catastrophic injuries leading to death or euthanasia, the following rating guide has been used to estimate injury severity.

**Table 1:** Greyhound injury rating guide indicating expected stand down periods and examples of related injury types.

Rating	Incapacitation period	Typical injury types
Minor Class I	0 days	Mild skin abrasions/grazes
Minor Class II	1 to 10 days	Grade 1 muscle injury Mild skin laceration
Medium	11 to 21 days	Joint /ligament sprain Skin laceration Grade 2 muscle injury
Major	Greater than 21 days	Grade 3 muscle injury Bone fractures
Catastrophic	Deceased or euthanased immediately	Severe skull or spinal trauma Complex /open/joint fractures

## Part 1. Reported greyhound racing injuries

From 1 April 2018 to 30 June 2018 (inclusive) 298 race meetings were conducted across NSW at TAB and Non-TAB racing venues. During these race meetings a total of 4357 individual greyhounds raced in a total of 23,271 race starts. There was an average number of 5.3 starts per greyhound throughout the reporting period.

There were a total of 722 incidents where a greyhound with at least one injury was identified by an on track veterinarian after participation in a race in NSW during this period. These injury incidents affected a total of 641 individual greyhounds.

The total number of reported greyhound racing injury incidents during the period represents a rate of 31.0 injury incidents per 1000 race starts and 16.6 per cent of the total number of individual greyhounds to have raced incurred at least one injury. The severity of these injuries is indicated in the following table.

**Table 2:** Total number of injury incidents by injury severity rating, injury rates per 1000 starts and injury rate per 100 greyhounds in NSW race meetings between 1 January 2018 and 31 March 2018 (Q1) and 1 April 2018 and 30 June 2018 (Q2).

Injury Severity Rating	Incapacitation period	Total numbers of injury incidents		Injury rate (injury incidents/1000 starts)		Injury rate * (injury incidents/100 greyhounds)	
		Q1	Q2	Q1	Q2	Q1	Q2
Minor I	0 days	48	95	2.4	4.1	1	2.2
Minor II	1 to 10 days	234	251	12	10.8	5.2	5.8
Medium	11 to 21 days	235	218	12	9.4	5.2	5.0
Major	Greater than 21 days	109	127	5.6	5.5	2.4	2.9
Catastrophic	Deceased or euthanased immediately	37	31	1.9	1.5	0.8	0.7
<b>TOTAL</b>		<b>663</b>	<b>722</b>	<b>33.9</b>	<b>31.0</b>		

\*The percentage of individual greyhounds racing in the reporting period who suffered an injury in each of the injury severity rating categories. Note that some greyhounds were injured more than once in the period so a summation of this column is not appropriate.

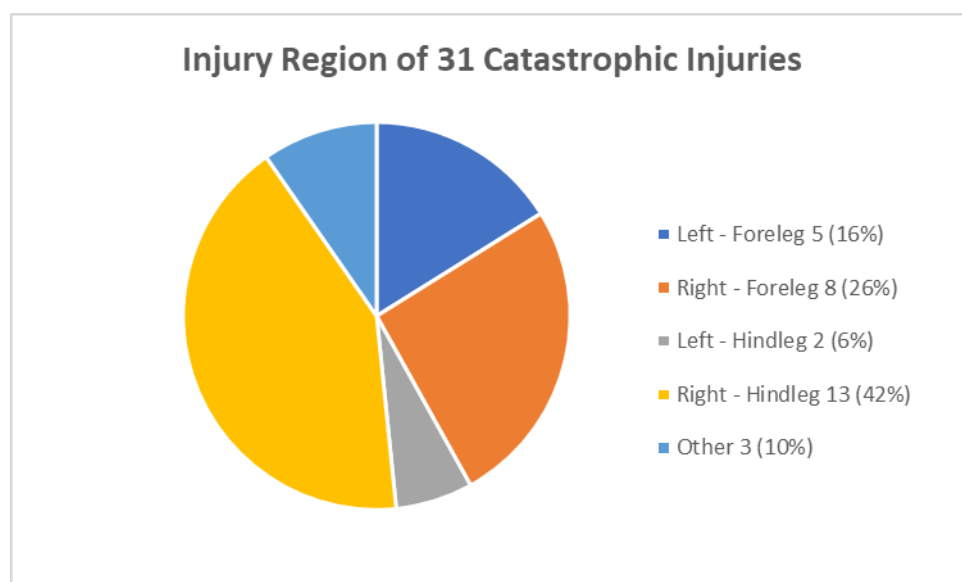
## Part 2. Reported greyhound racing fatalities

GRNSW defines racing fatalities as all injuries and incidents occurring during or subsequent to a race resulting in death at the race meeting or requiring euthanasia at the race meeting.<sup>1</sup>

There were a total of 31 reported greyhound racing fatalities from 1 April 2018 to 30 June 2018. Of the 31 reported greyhound racing fatalities, one died as a result of sudden death at track side following a race, with all other fatalities involving euthanasia following catastrophic injury. The total number of reported greyhound racing fatalities during the period represents a fatality rate of 1.3 deaths per 1000 race starts.

The main sites of the injuries leading to euthanasia are shown in Figure 1.

**Figure 1:** Injuries resulting in 31 greyhound racing fatalities from 1 April 2018 to 30 June 2018 at or immediately after race meetings in NSW.



### Consequent outcomes of Q1 2018 Injured Greyhounds

Of the 626 greyhounds reported to have incurred a non-fatal injury in the Quarter 1 2018 Racing Injury Report (1 January 2018 to 31 March 2018), 2 were reported as deceased by 30 June 2018.

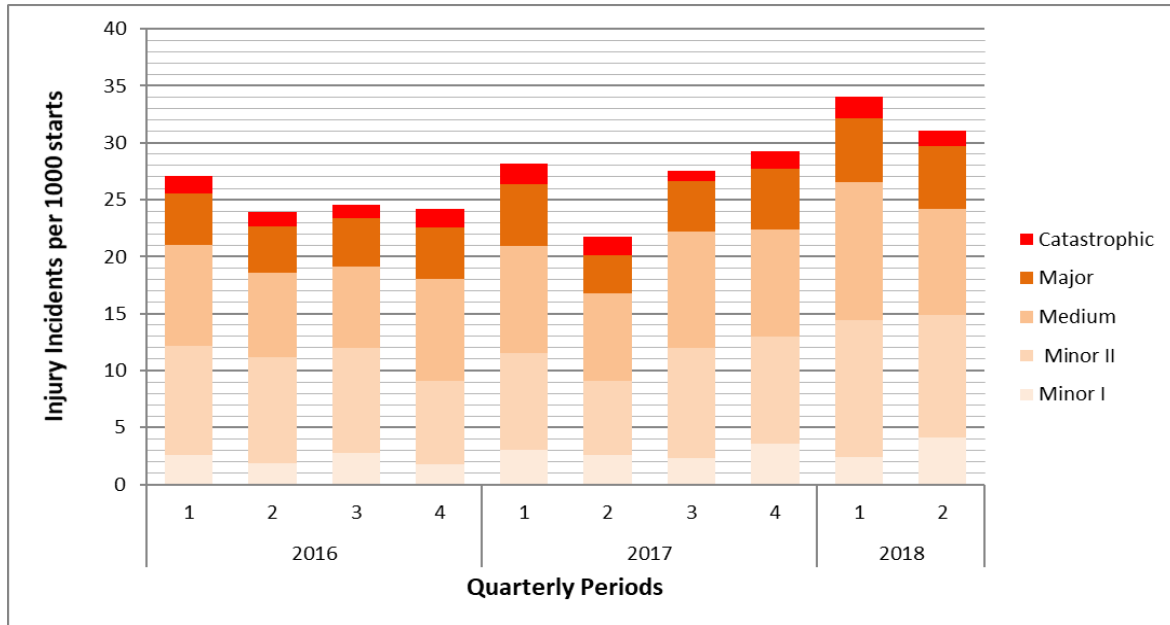
---

<sup>1</sup> This statistic does not include euthanasia that occurs subsequent to race meetings at private veterinary hospitals after further diagnostic or treatment advice is sought.

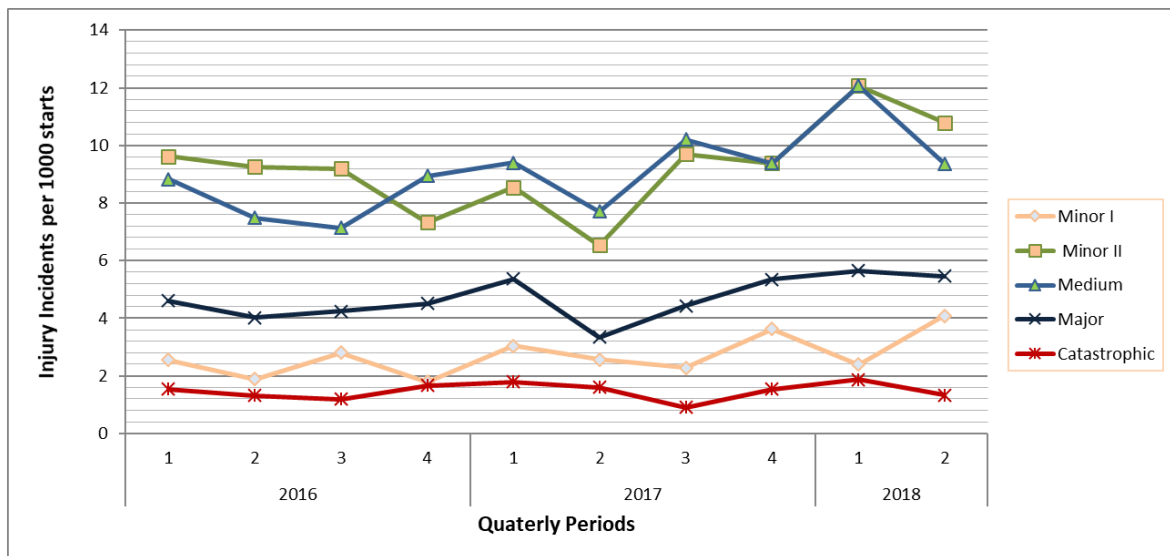
# Part 3. Racing injury and fatality trend report

The quarterly trend in injury severity ratings reported from **1 January 2016 to 30 June 2018** is shown in Figure 2.

**Figure 2:** The quarterly trend in injury severity ratings reported from **1 January 2016 to 30 June 2018**.



**Figure 2a:** Breakdown of injury severity ratings reported from **1 January 2016 to 30 June 2018**.



## **Part 4. Analysis and Comment**

There has been a general decrease in the total number of injury incidents over the reporting period, with the overall injury rate of 31.0 injuries per 1000 starts compared with the overall injury rate of 33.9 injuries per 1000 starts for the previous quarter.

There was an increase in the overall rates for Minor Class I injuries reported. There were decreases in the rates for all other categories of injury.

When considering major and catastrophic injuries there are many causal factors involved. These causal factors may relate to the individual greyhound (including but not limited to genetics, physical development, injury history, training history, prior race history and race day preparation) as well as race and track related factors.

GRNSW is actively engaged in track safety reform work to reduce the level of injuries that are track related. The University of Technology Sydney (UTS) Faculty of Engineering and Information Technology is conducting research on behalf of GRNSW to identify track related causal factors. GRNSW provides these quarterly injury reports to UTS for inclusion in its analysis as part of the ongoing UTS Track Design Study.

GRNSW has also established an injury review panel to review injuries in relation to all causal factors and to identify associated strategies to reduce the rate of injury at NSW tracks. UTS and the Greyhound Welfare and Integrity Commission are involved in the injury review process.

The site of major and catastrophic injuries shows a predominance of injuries to the right hind and fore legs with the right hind leg being injured the most. The right legs of the greyhound are on the outside as the greyhound races through a turn. From a physical perspective the outside legs are subjected to greater stress during racing due to the sideways momentum of a greyhound at a turn on the track.